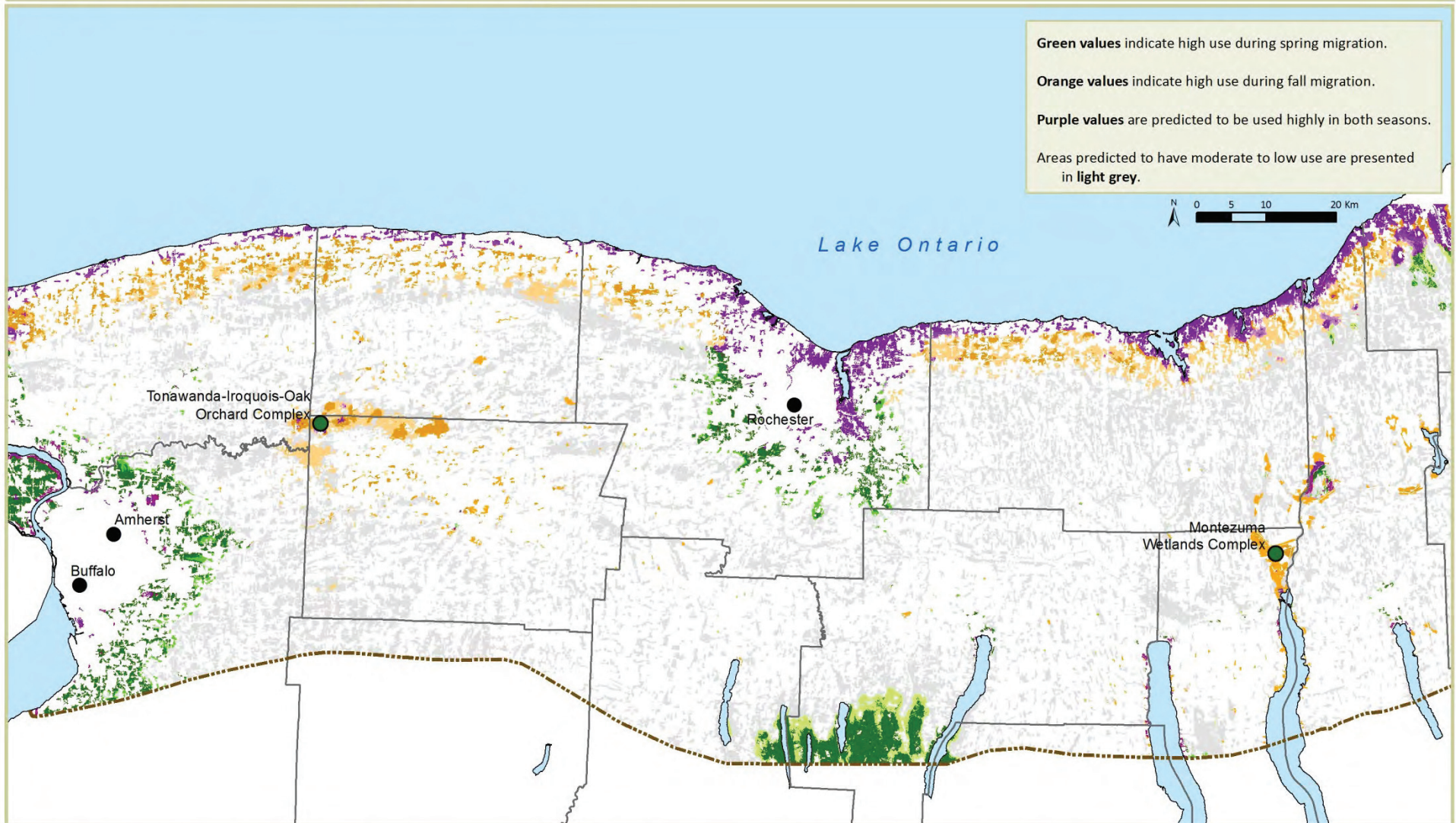


Migratory Bird Stopover Project



Map 8. Seasonal importance of areas predicted to have high migrant richness and/or abundance.

Map created: 8/10/2012

Report website: www.nature.org/nybirds

Funding by: New York Great Lakes Protection Fund

Habitat falling within the top part of the distribution of predicted values (greater than one standard deviation above the mean) for richness (light shades), abundance (medium shades), or both richness and abundance (darkest shades) in spring (green), fall (orange) or both seasons (purple). All pixels displayed are potentially high use stopover habitat. Before taking the top pixels, the whole set was filtered to include only land cover classes that are possible habitat for migratory land birds (based on CCAP 2006) and clusters of suitable habitat large enough that we might have sampled them (>80 pixels). Possible habitat not predicted to have high abundance or richness of migrants in either season are shown in light grey.

SP Richness	FA Abundance	SP & FA Richness	SP Richness and SP & FA Abundance
SP Abundance	FA Richness & Abundance	SP Abundance & FA Richness	SP & FA Abundance and FA Richness
SP Richness & Abundance	SP Richness & FA Abundance	SP & FA Richness and FA Abundance	Top Site for All Responses
FA Richness	SP & FA Abundance	SP & FA Richness and SP Abundance	

The Nature Conservancy
Protecting nature. Preserving life.™

Audubon NEW YORK

New York
Natural Heritage
Program