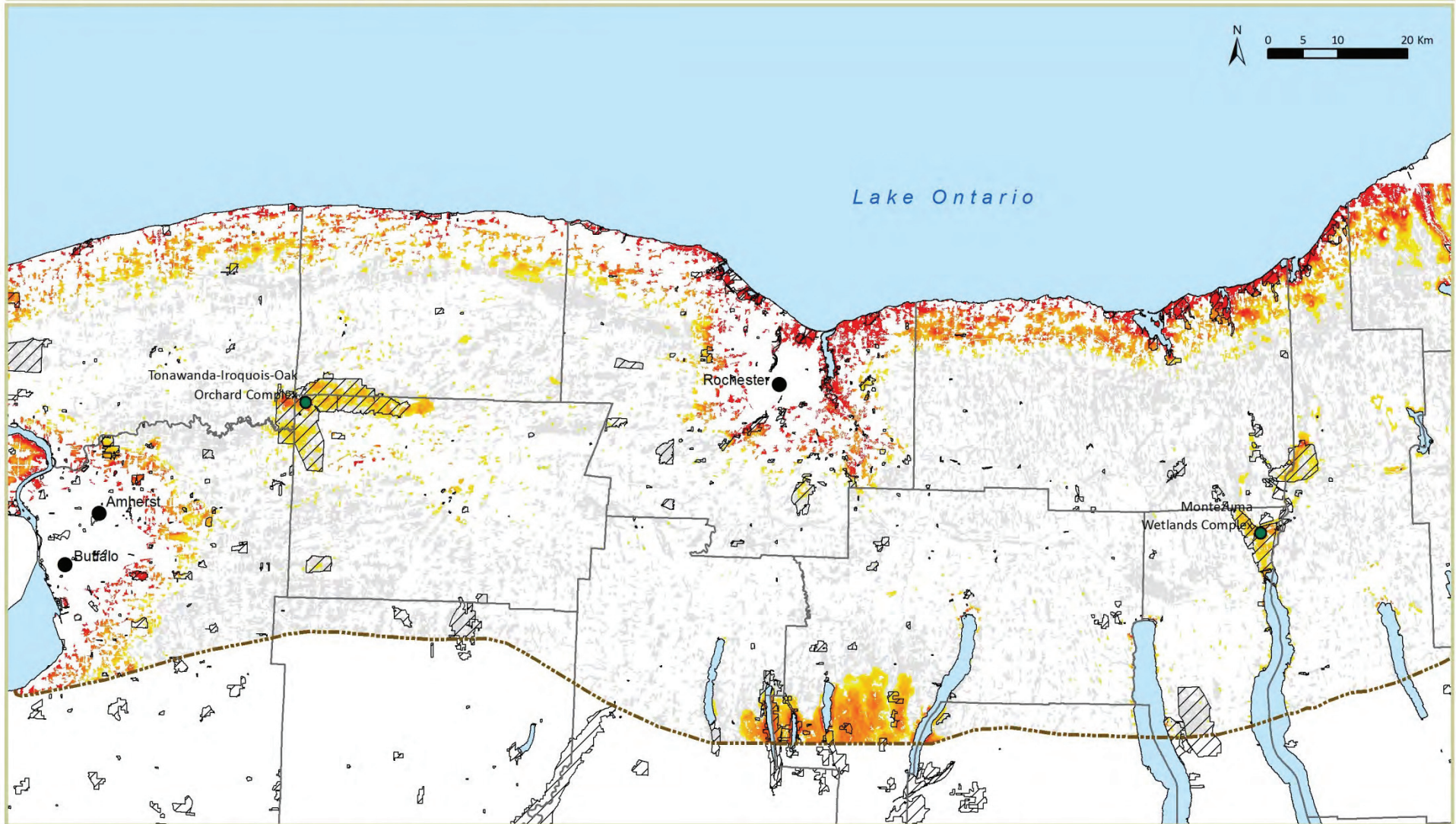


Migratory Bird Stopover Project



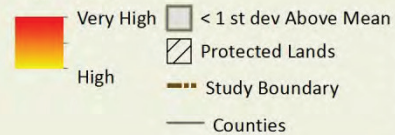
Map 7. Areas predicted to have high abundance and richness of migrants during spring and fall migrations.

Map created: 8/10/2012

Report website: www.nature.org/nybirds

Funding by: New York Great Lakes Protection Fund

Top Areas



After filtering predictions to include only land cover classes that are possible habitat for migratory land birds (based on CCAP 2006), and occur in clusters of suitable habitat large enough that we might have sampled them (>80 pixels). The top of the distribution (greater than one standard deviation above the mean) of each of the four of the individual responses (spring and fall richness and abundance) were rescaled from 0-1 and added together to create this map. Therefore, all pixels on this map are potentially high-use stopover habitat. Habitat at the high end of the spectrum, in red, was either predicted to have very high values for both abundance and richness in an individual season, or high values of responses in both seasons. Possible habitat not predicted to have high abundance or richness of migrants in either season is shown in light grey. Protected Lands layer - TNC 2010.

The Nature Conservancy
Protecting nature. Preserving life.™

Audubon NEW YORK

New York
Natural Heritage
Program